

Over mij

Sebastian Kügler

- 1,5 jaar actief voor KDE
- Developer "guidance"
- Marketing Working Group

- IRL: EuroQUIS, CodeYard



LinuxBijeenkomst 2005



sebas@kde.nl

Systembeheer onder Linux/Unix

- sterk afhankelijk van de distributie
- meestal via commandline
- weinig grafische tools



LinuxBijeenkomst 2005



sebas@kde.nl

Systembeheer onder KDE

- KDE is platformonafhankelijk
- distributies bieden eigen tools aan
- weinig grafische systeembeheertools in KDE



LinuxBijeenkomst 2005



sebas@kde.nl

Oplossing: "Guidance"

- set systeembeheer tools
- werkt op verschillende distributies
- Ziet overal hetzelfde uit:

Het maakt niet uit welke distributie je gebruikt!



LinuxBijeenkomst 2005



sebas@kde.nl

Guidance: Onderdelen

- *serviceconfig*: module om init systeem in te stellen
- *mountconfig*: module om media in het systeem te integreren
- *userconfig*: module voor gebruikers- en groepenbeheer
- *displayconfig*: module om scherm en weergave in te stellen
- Python - PyKDE



LinuxBijeenkomst Day 2005



sebas@kde.nl

Guidance: Serviceconfig

System Services - KDE Control Center <@neo>

File View Settings Help

Index Search Help

System Services

Run level: Multiuser Mode (2)

Service	Start at Boot	Status
skelcton	No	not running
spamassassin	Yes	not running
ssh	Yes	not running
stop-bootlogd	Yes	not running
sudo	No	not running
syslogd	Yes	not running
udev	No	not running
udev-mtab	No	not running
umountfs	No	not running
umountnfs.sh	No	not running
urandom	No	not running
wlan	No	not running
xfree86-common	No	not running
atd	Yes	running
kdm	Yes	running
klogd	Yes	running
privoxy	Yes	running
xfs-xtt	Yes	running

Service Details

Description:

/etc/init.d/xfs-xtt: start or stop the X font server with X-TrueType

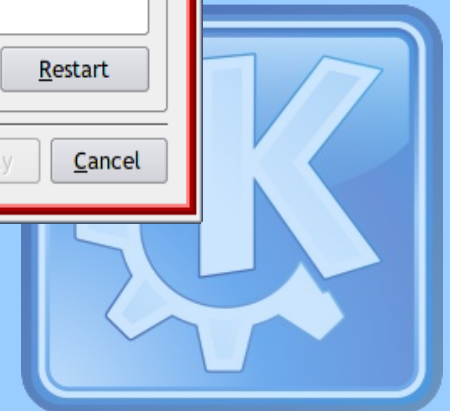
Start during boot

Status:

running

Start Stop Restart

Help Defaults OK Apply Cancel



Guidance: Mountconfig

Disk & Filesystems - Disk & Filesystem Configuration

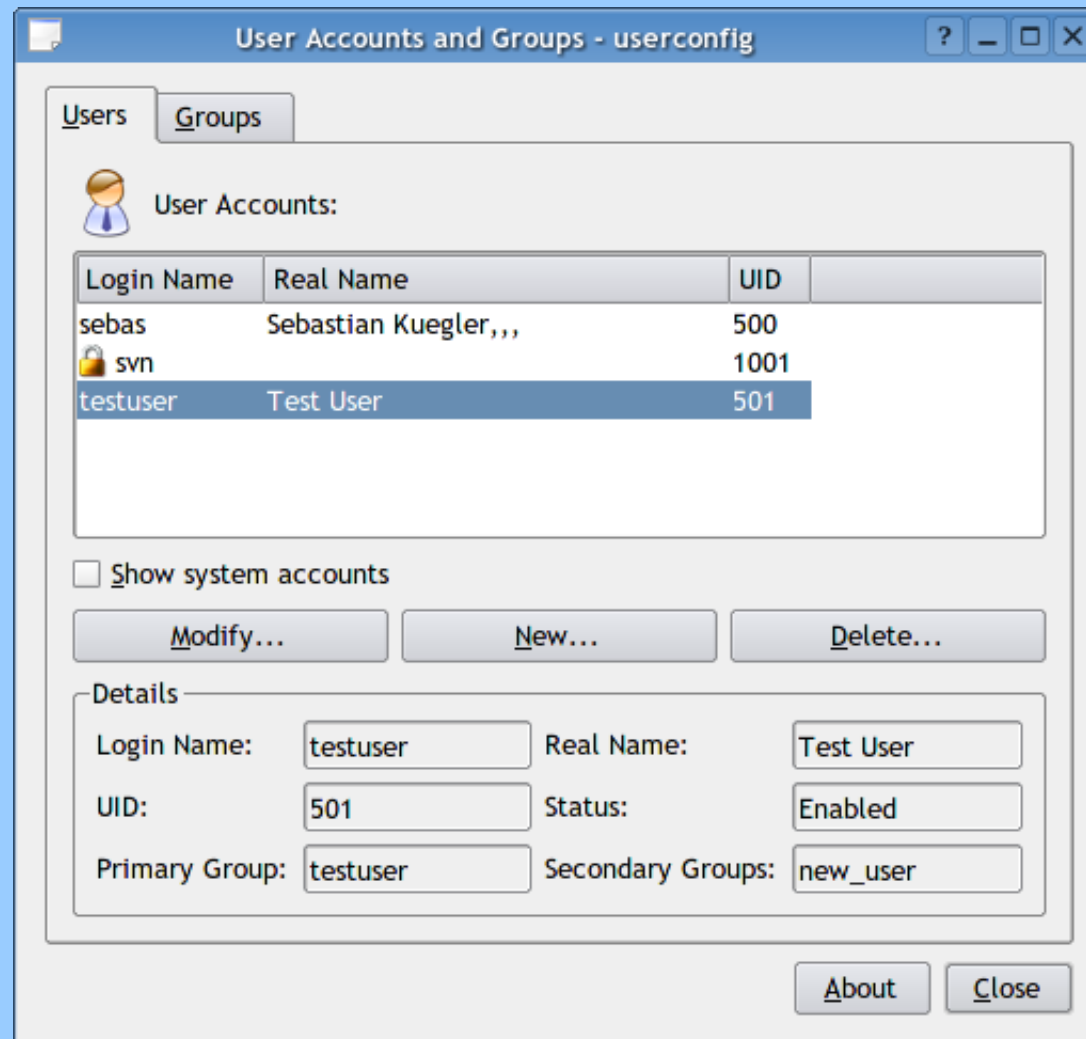
Available Disks and Filesystems:

Name	Mount Point	Type	Device	Enabled
⊖ Disk 'ATA ST3200822AS'				
1 Partition 167.6 Gb	/data	reiserfs	/dev/sdb1	● Enabled
2 Partition 18.7 Gb	/home	reiserfs	/dev/sdb2	● Enabled
⊖ System				
/proc	/proc	proc	proc	● Enabled
/sys	/sys	sysfs	sysfs	● Enabled
/proc/bus/usb	/proc/bus/usb	usbdevfs	usbdevfs	● Enabled
⊖ Disk 'ATA WDC WD360GD-50GH'				
1 Partition 18.6 Gb	/	reiserfs	/dev/sda1	● Enabled
2 Partition 14.0 Gb	/pure64	reiserfs	/dev/sda2	● Disabled
3 Partition 1.9 Gb	none	swap	/dev/sda3	● Enabled
⊖ Optical Disk 'PIONEER DVD-RW DVR-108'	/media/cdrom0	iso9660	/dev/hdb	● Disabled
/marvin	/marvin	nfs	marvin:/	● Enabled

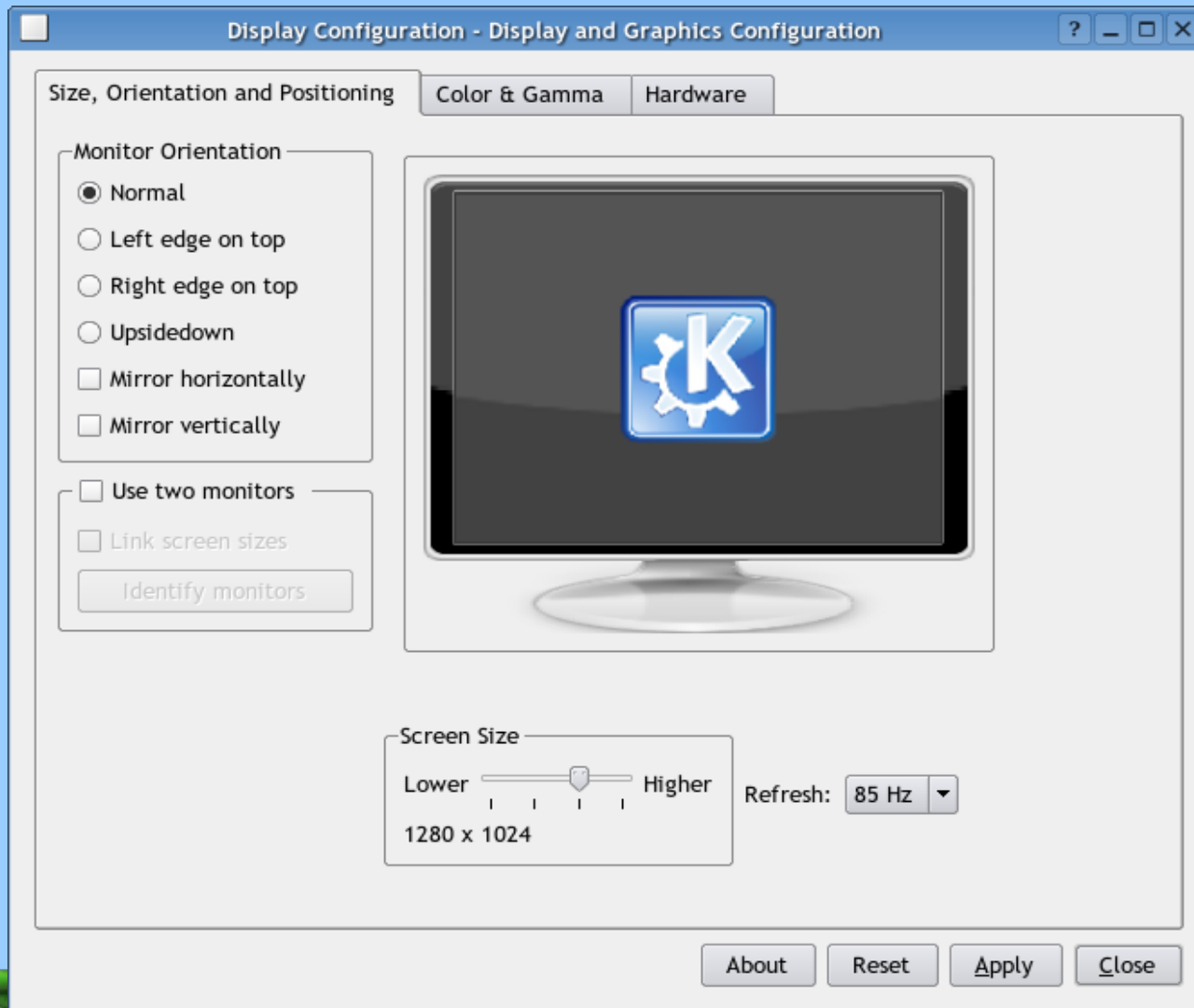
New... Modify... Delete... Enable Disable About Close



Guidance: Userconfig



Guidance: Displayconfig



KDE Nederland

- Software ontwikkeling
- Vertaling
- Actieve community
- events

Web: **<http://www.kde.nl>**

IRC: **#kde-nl** op
irc.freenode.net



LinuxBijeenkomst 2005



sebas@kde.nl